



# AUSMON RESOURCES LTD AGM PRESENTATION

## **New South Wales and Queensland Projects**

Mark Derriman(Chief Technical Officer)

October 2018

# Disclaimer

Certain statements contained in this presentation, including information as to the future financial or operating performance of Ausmon Resources Limited and its projects, are forward-looking statements. Such forward looking statements:

- Are necessarily based upon a number of assumptions and estimates that, while considered reasonable by Ausmon Resources Limited, are inherently subject to significant technical, business, economic, competitive, political and social uncertainties and contingencies;
- Involve known and unknown risks and uncertainties that could cause actual events or results to differ materially from estimated or anticipated events or results reflected in such forward-looking statements; and
- May include, among other things, statements regarding targets, estimates and assumptions in respect of production, prices, operating costs, results, capital expenditures, reserves and resources, and are or may be based on assumptions and estimates related to future technical, economic, market, political, social and other conditions.

Ausmon Resources Limited disclaims any intent or obligation to update publicly any forward-looking statements, whether as a result of new information, future events or otherwise.

All forward-looking statements made in this presentation are qualified by the foregoing cautionary statements. Investors are cautioned that forward-looking statements are not guarantees of future performance and accordingly investors are cautioned not to rely on forward-looking statements due to the inherent uncertainty therein.

The information in this presentation relates to exploration results and is based on information compiled by Mr Mark Derriman, Member of the Australasian Institute of Geoscientist. Mr Derriman has sufficient experience that is relevant to the style of mineralisation and type of deposits under consideration and to the activities which he is undertaking to qualify as a Competent Person as defined in the 2012 Edition of the JORC Australasian Code for Reporting of Exploration Results, Mineral Resources and Ore Reserves.

## 6 Granted tenements in NSW and 4 Tenement applications in Queensland, Australia



# Ausmon Tenement Register

Lease	Application	Name	Commodity	Applied Date	Grant Date	Expiry Date	Blocks	Approx km2
<b>New South Wales</b>								
<b>Broken Hill</b>								
EL 8745	ELA 5637	Kanbarra	Cobalt/Base Metals	25/01/2018	15/05/2018	15-May-2024	45	130.78
EL 8746	ELA 5638	Redan	Cobalt/Base Metals	25/01/2018	15/05/2018	15-May-2024	6	17.47
EL 8747	ELA 5639	Stirling Vale	Cobalt/Base Metals	25/01/2018	24/05/2018	24/05/2024	9	26.23
EL 6400		Grassmere	Copper		1/04/2005	1/04/2019	17	49.9
						<b>Total</b>	<b>77</b>	<b>224.38</b>
<b>Cobar(Pooraka)</b>								
EL 6413		Langbein	Gold		17/05/2005	17/05/2019	6	17.57
EL 8424		Canbelgo	Gold		17/02/2016	17/02/2019	8	23.43
						<b>Total</b>	<b>14</b>	<b>41</b>
<b>Queensland</b>								
<b>Greenvale</b>								
	EPMA 26813	Big Sandy Creek	Cobalt/Nickel	25/01/2018	N/A	N/A	26	84.53
	EPMA 26814	Porphyry Creek	Cobalt/Nickel	25/01/2018	N/A	N/A	39	126.52
	EPMA 26815	Conjuboy	Cobalt/Nickel	25/01/2018	N/A	N/A	20	65.04
							<b>86</b>	<b>276.09</b>
<b>Gympie</b>								
	EPMA 26764	Mt Tewoo	Cobalt/Nickel	25/01/2018	N/A	N/A	58	178.5
						<b>Total</b>	<b>58</b>	<b>178.5</b>
						<b>Grand Total</b>	<b>235</b>	<b>720</b>



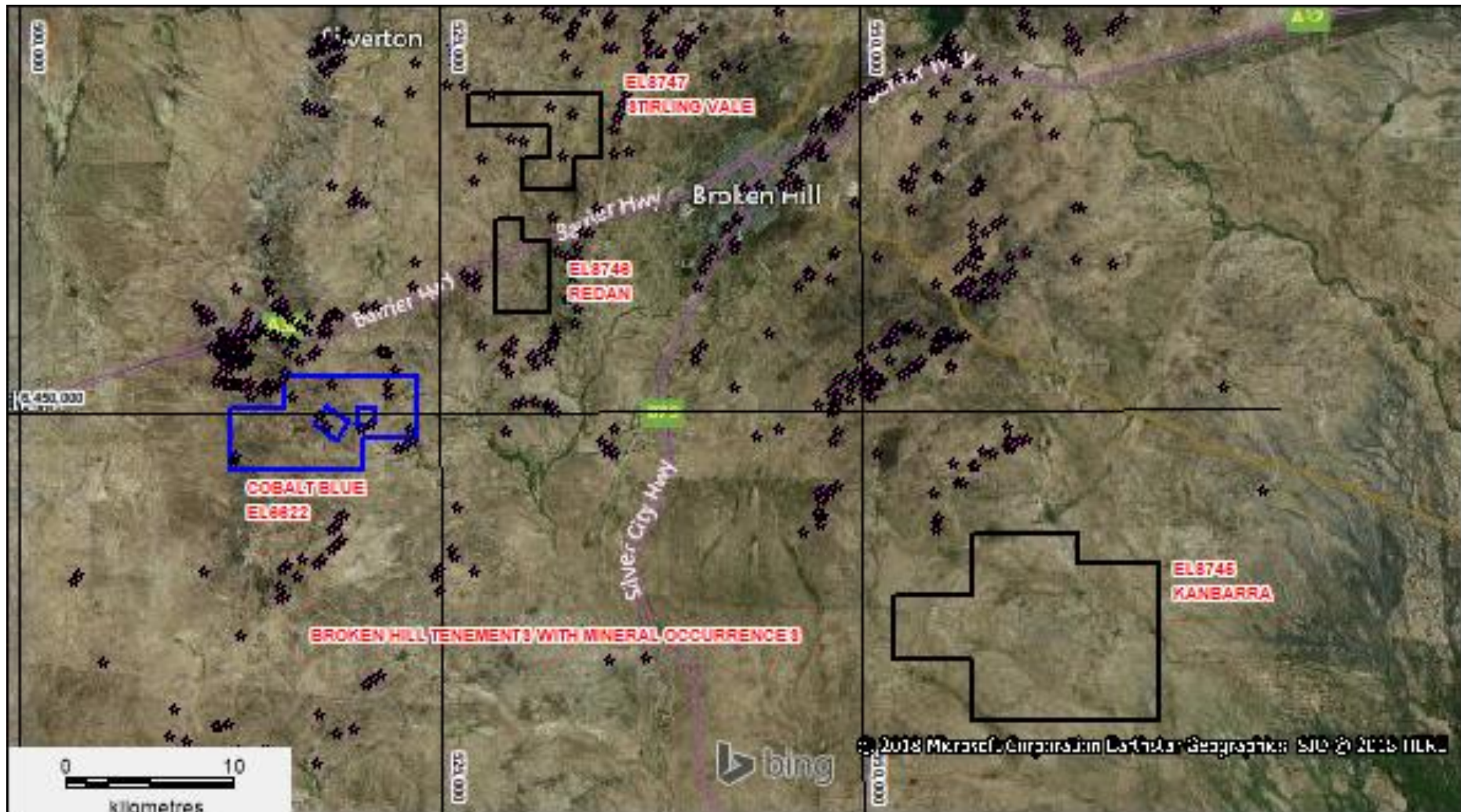
# Broken Hill Tenements



Mining has been important to Broken Hill since the 1800's when orebody was discovered and many metals including cobalt have played their part



# Broken Hill Tenements

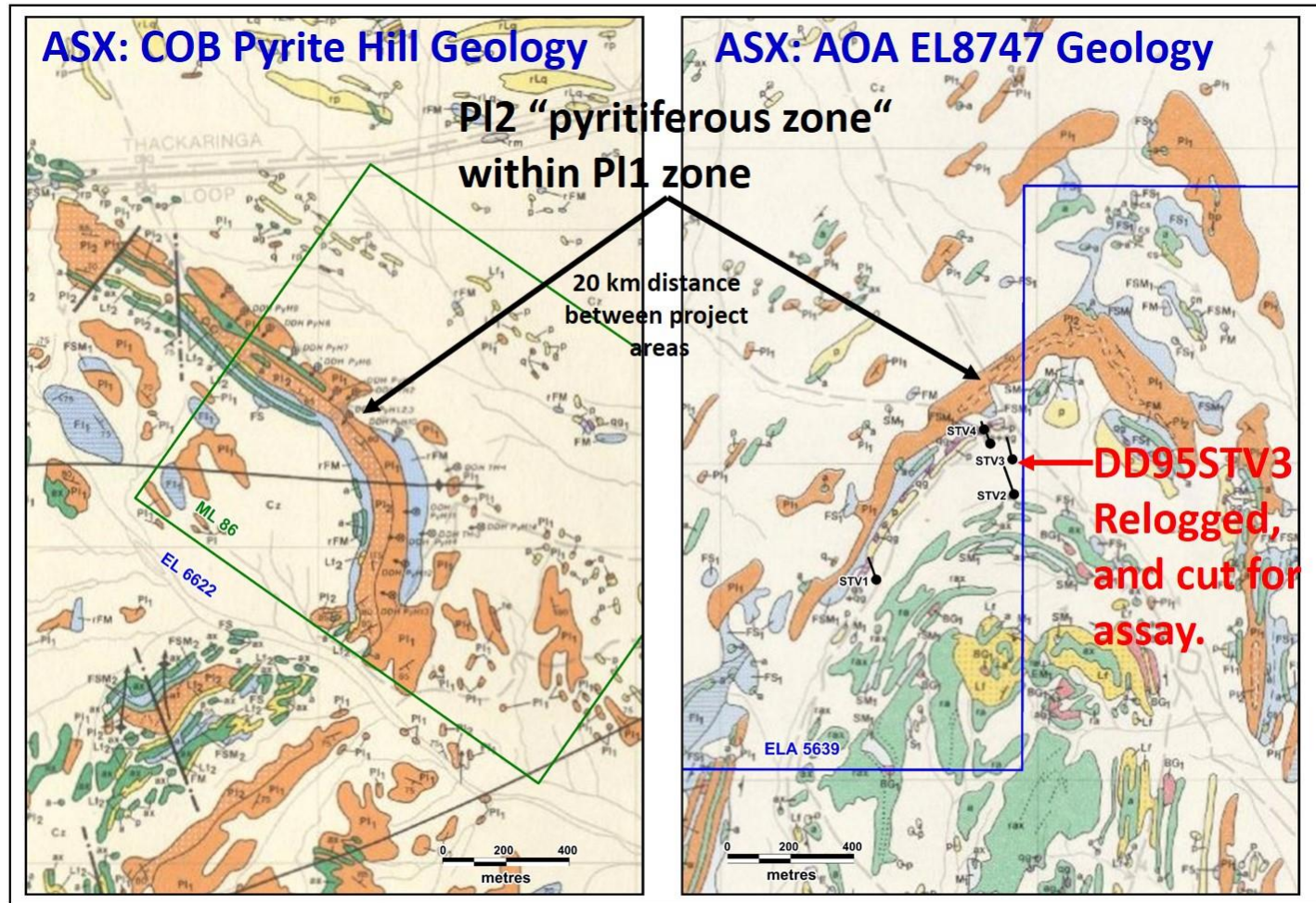


## Broken Hill Tenements – Cobalt Prospectivity

- Ausmon is targeting a Co rich Pyritiferous zone (P12) hosted by albite gneiss, this same stratigraphic horizon as is being evaluated by Cobalt Blue Holdings to the south west of Ausmon's tenements.
- Resampling of historical drill core at the Stirling Vale Prospect in EL 8747 returned the following assays:  
1.4m @ 962ppm Co from 130m and 0.5m @ 739ppm Co from 131.7m
- The Broken Hill tenements are also prospective for Broken Hill style Zn mineralisation as has been mined at Broken Hill since the mid 1800's  
0.87m @ 0.15% Zn from 85.8m
- The nearby Cobalt Blue has reported an Indicated/Inferred JORC2012 Mineral Resource of 54Mt @ 910ppm Co, 10.19% Fe and 9.71% S. A Pre-feasibility study has been completed and the company have commenced working towards a Bankable Feasibility Study.

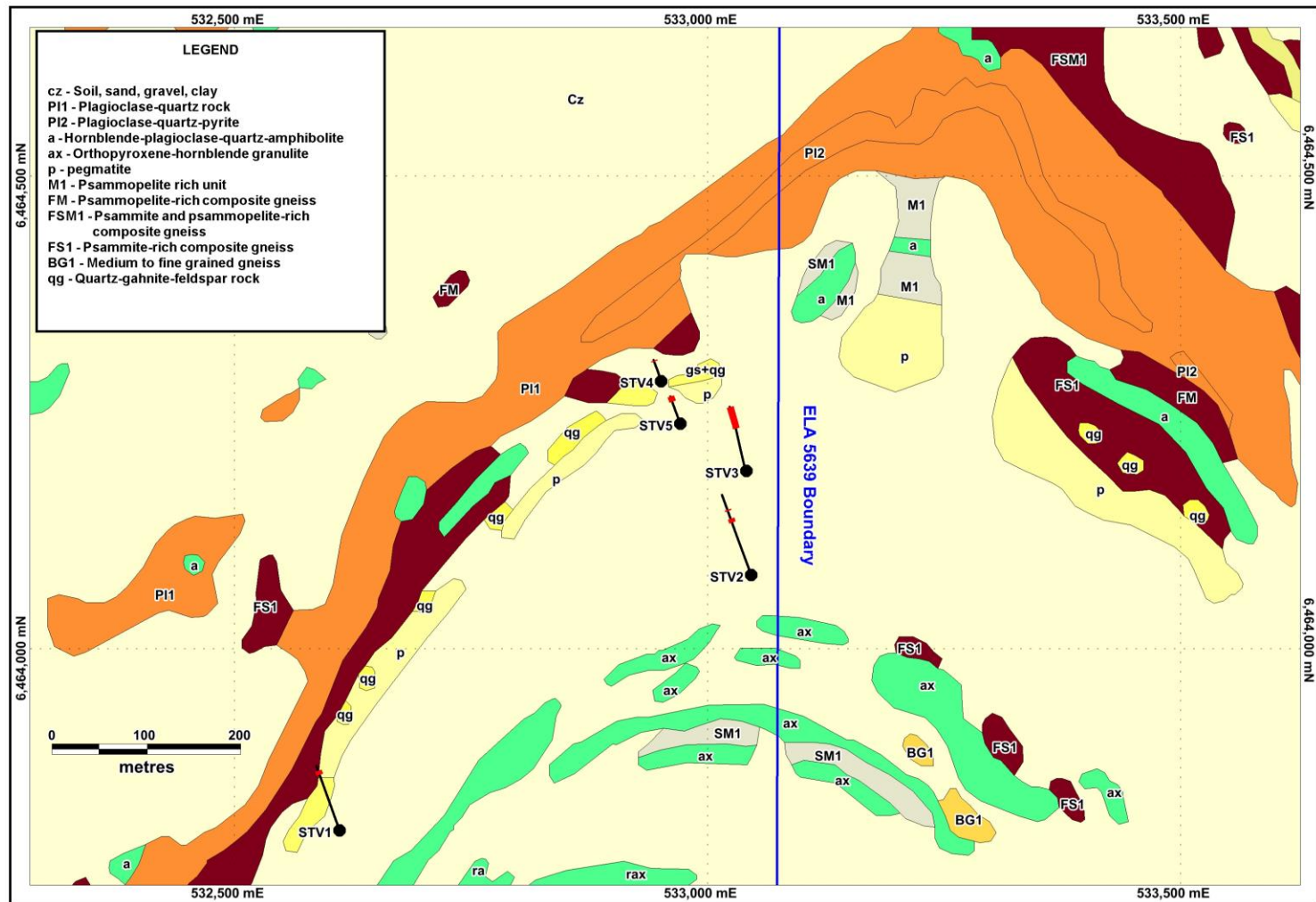


# EL8747 Stirling Vale

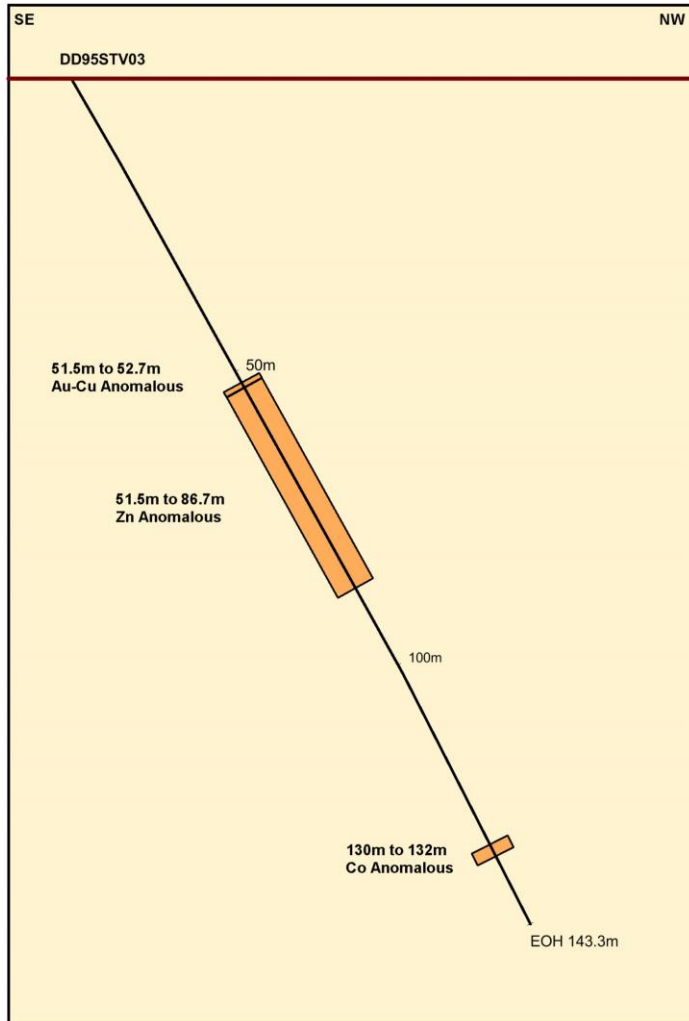




# EL8747 Stirling Vale



# EL8747 Stirling Vale— Core Hole(assayed) and Outcrop



Pyrite zone in  
outcrop left  
and hand  
specimen below





# EL8747 Stirling Vale– Core Hole and Outcrop (Co)



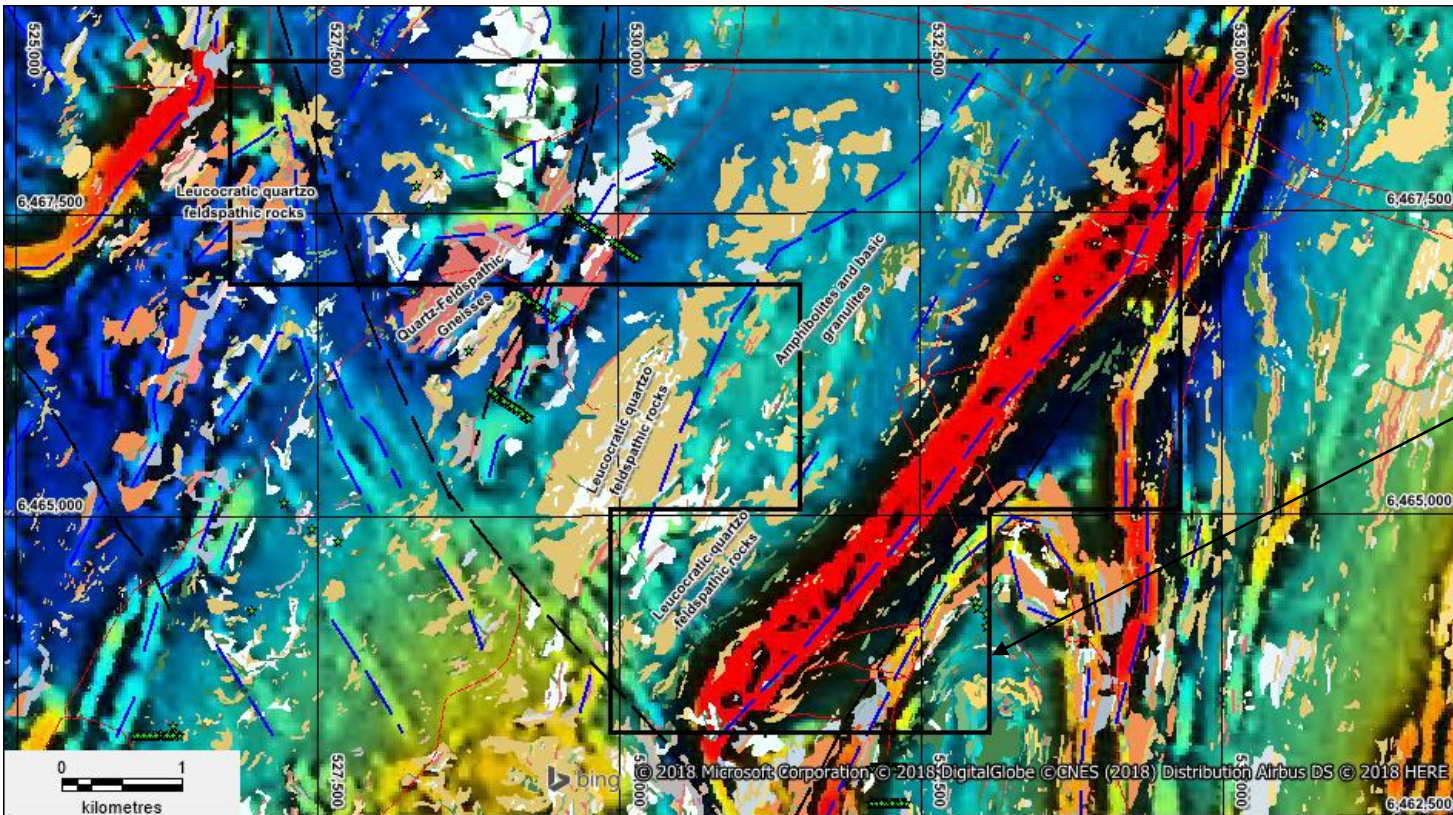


# EL8747 Stirling Vale— Core Hole and Outcrop (Pb/Zn)





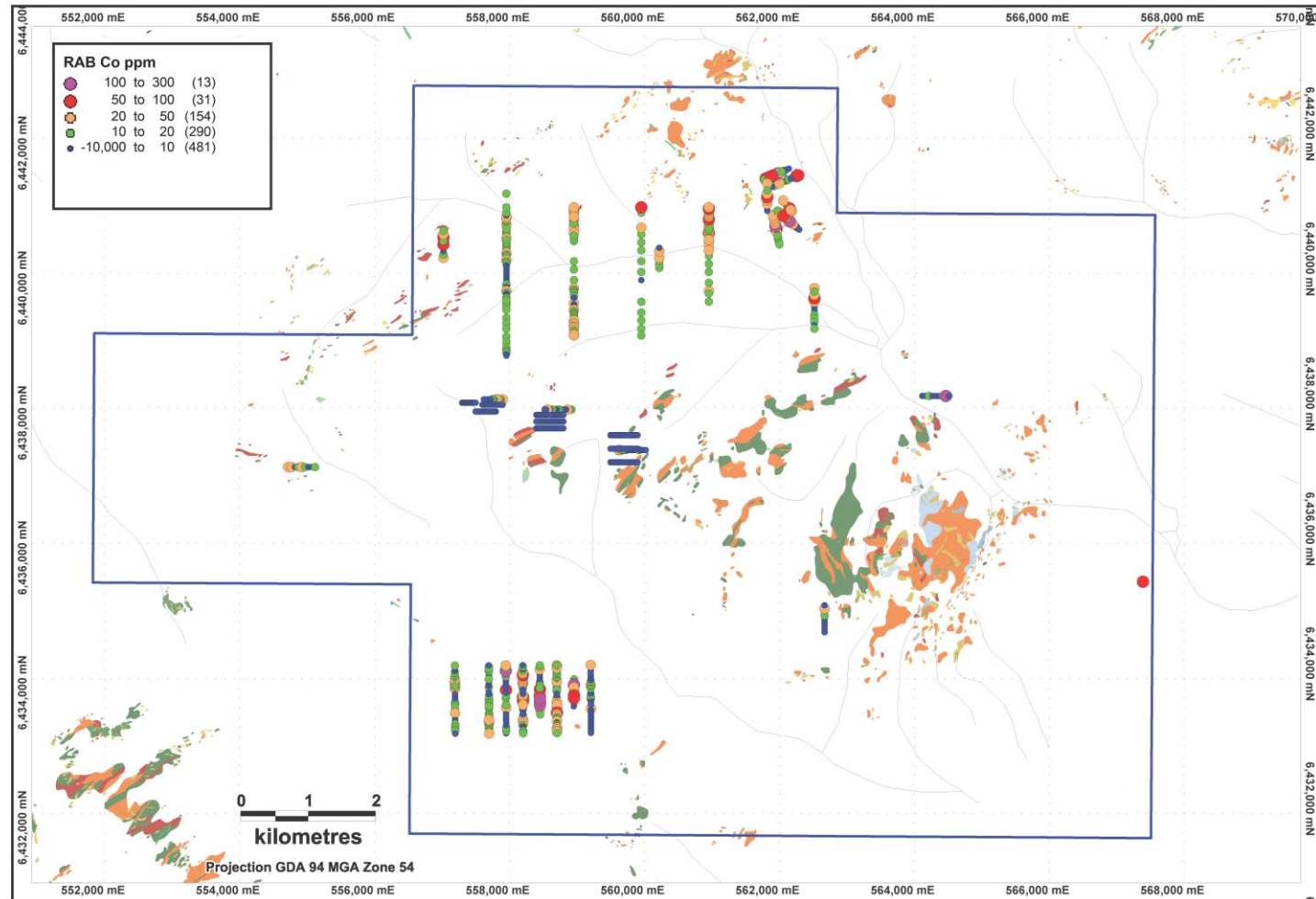
# Broken Hill Tenements – EL8747 –magnetics/geology



Aeromagnetic image showing highly magnetic zones in red

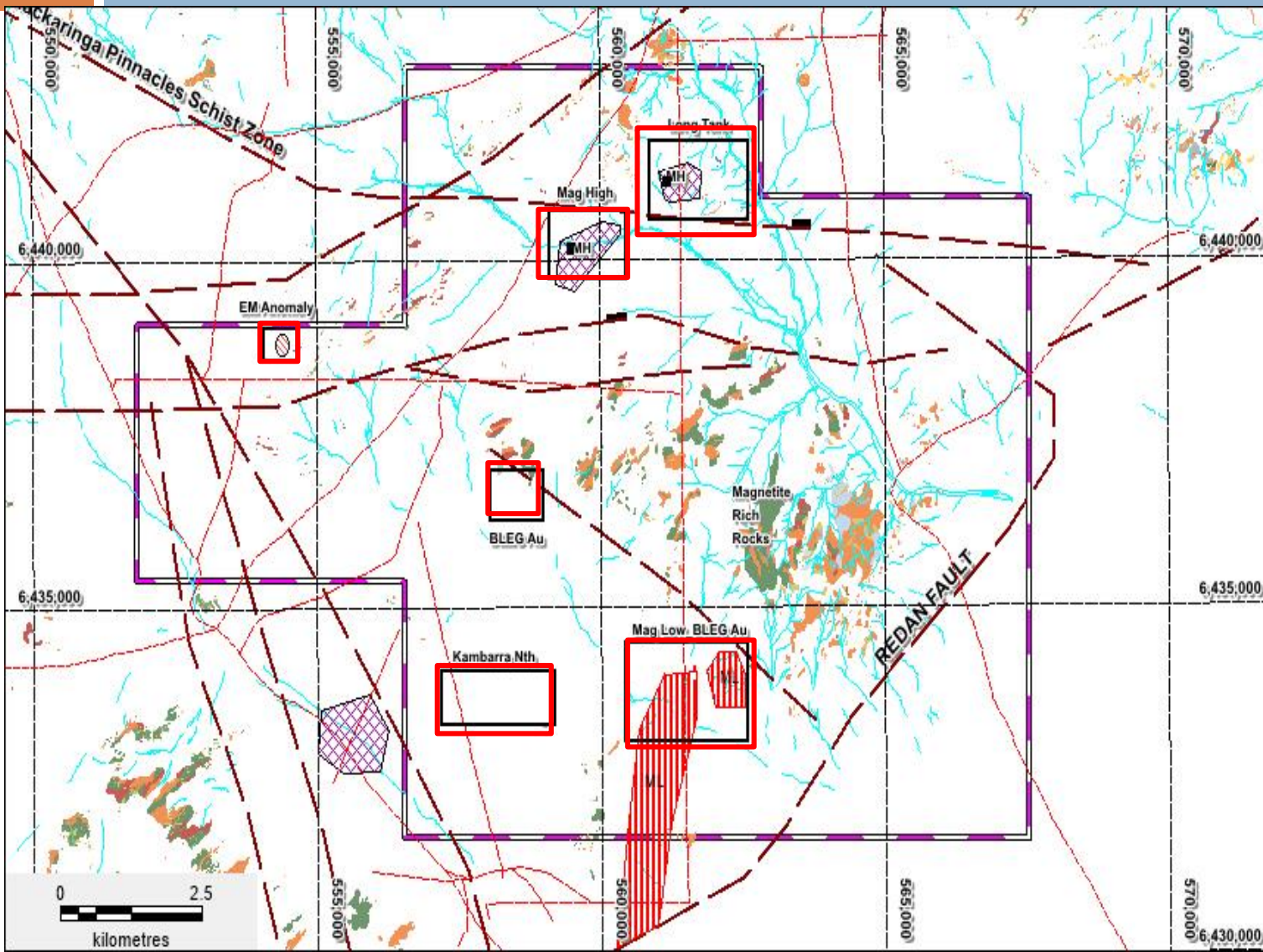
Ausmon tenement boundary in black

# EL8745 Kambarra– Historical Drilling





# EL8745 Kambarra– Target Areas



Target areas  
for 2018/2019  
exploration  
shown in red



# EL8745 Kambarra– North Kambarra Prospect Geology

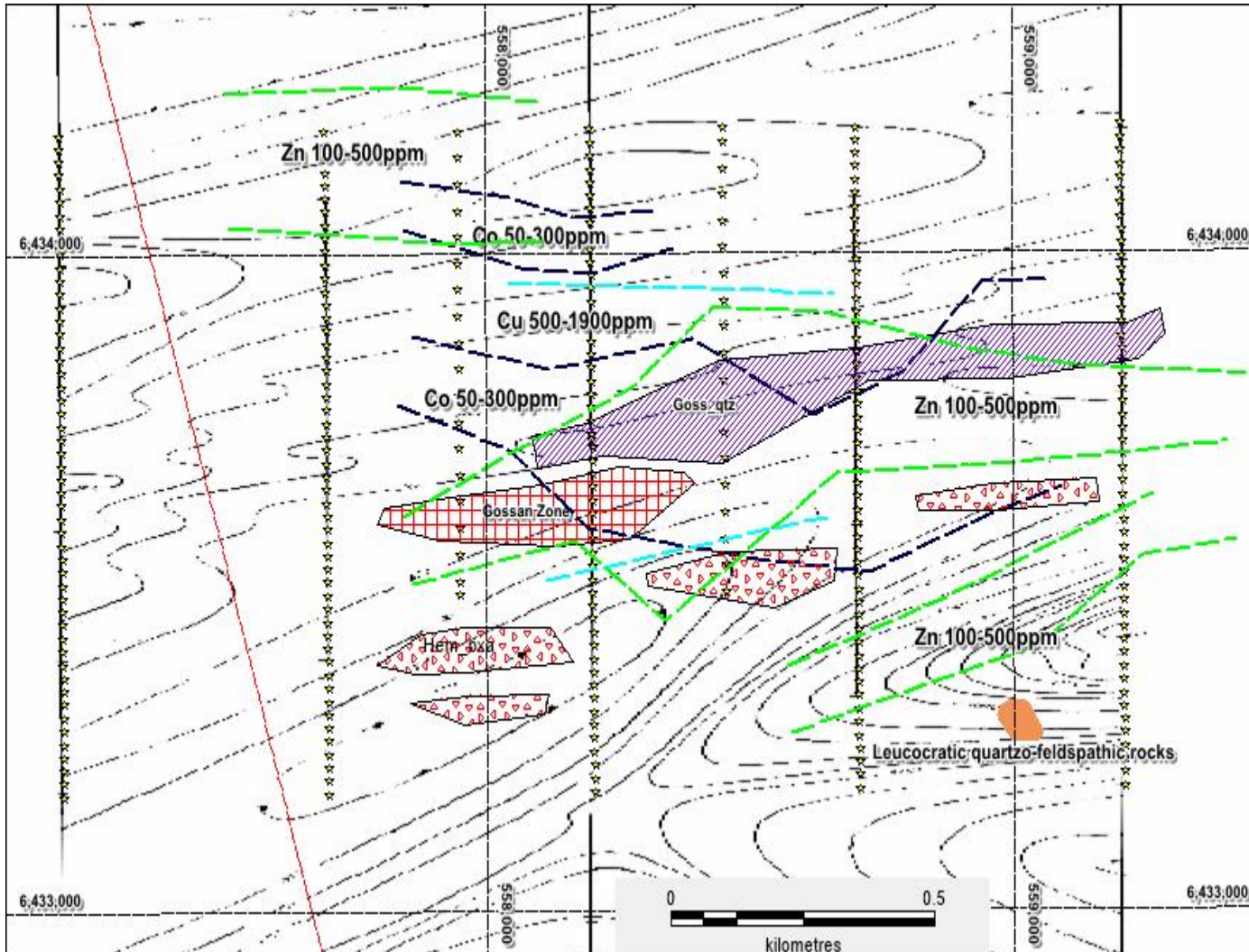


Surface expression of North Kambarra Prospect and a hand sample of the outcropping gossan





# EL8745 Kambarra– Kambarra North Prospect Drilling



Zn contours  
ppm(Green)

Cu contours  
ppm(Lt Blue)

Co contours ppm  
(Dk Blue)

Magnetic  
contours in grey

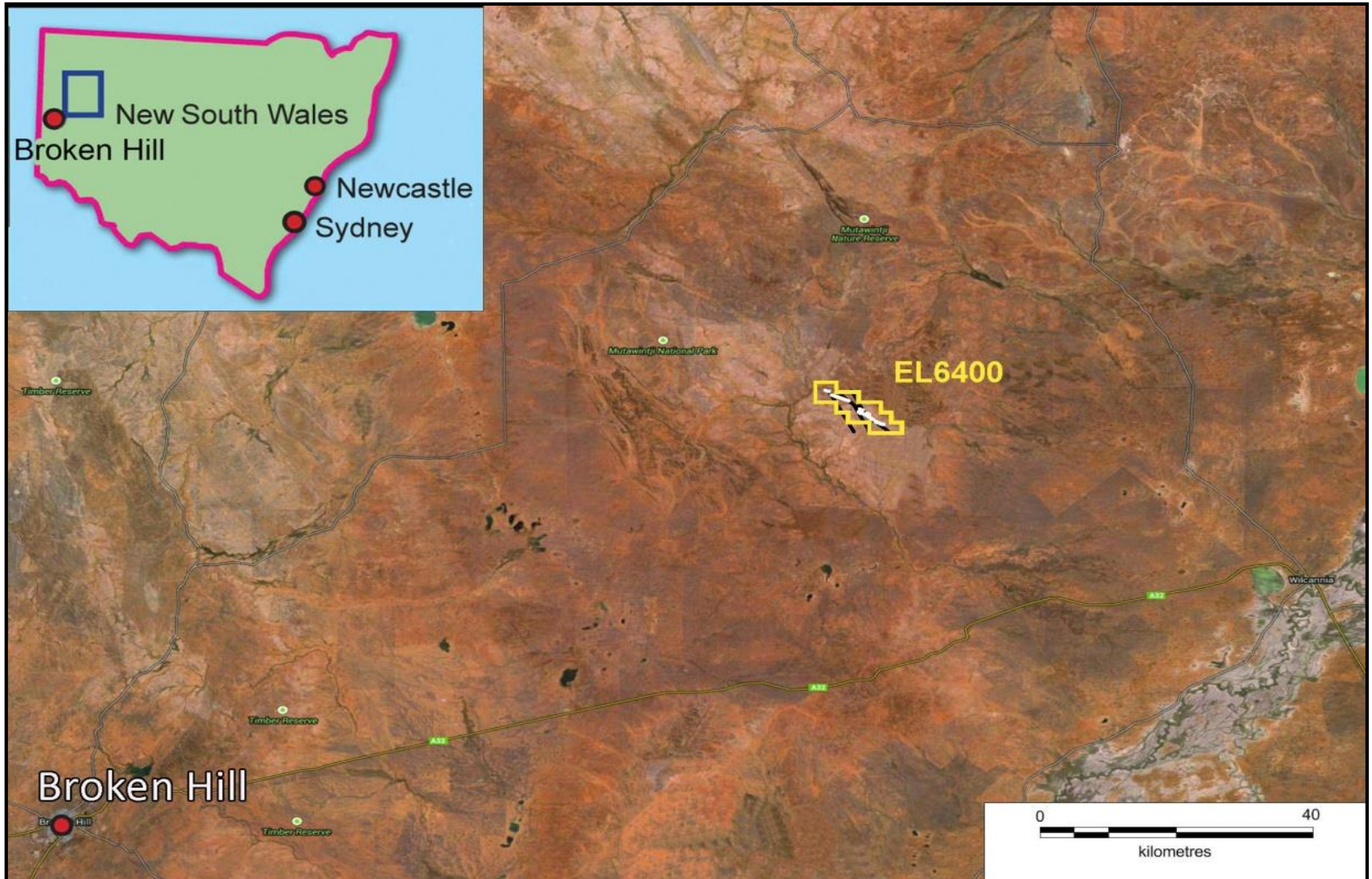
Mineralised  
zones shown in  
purple and red



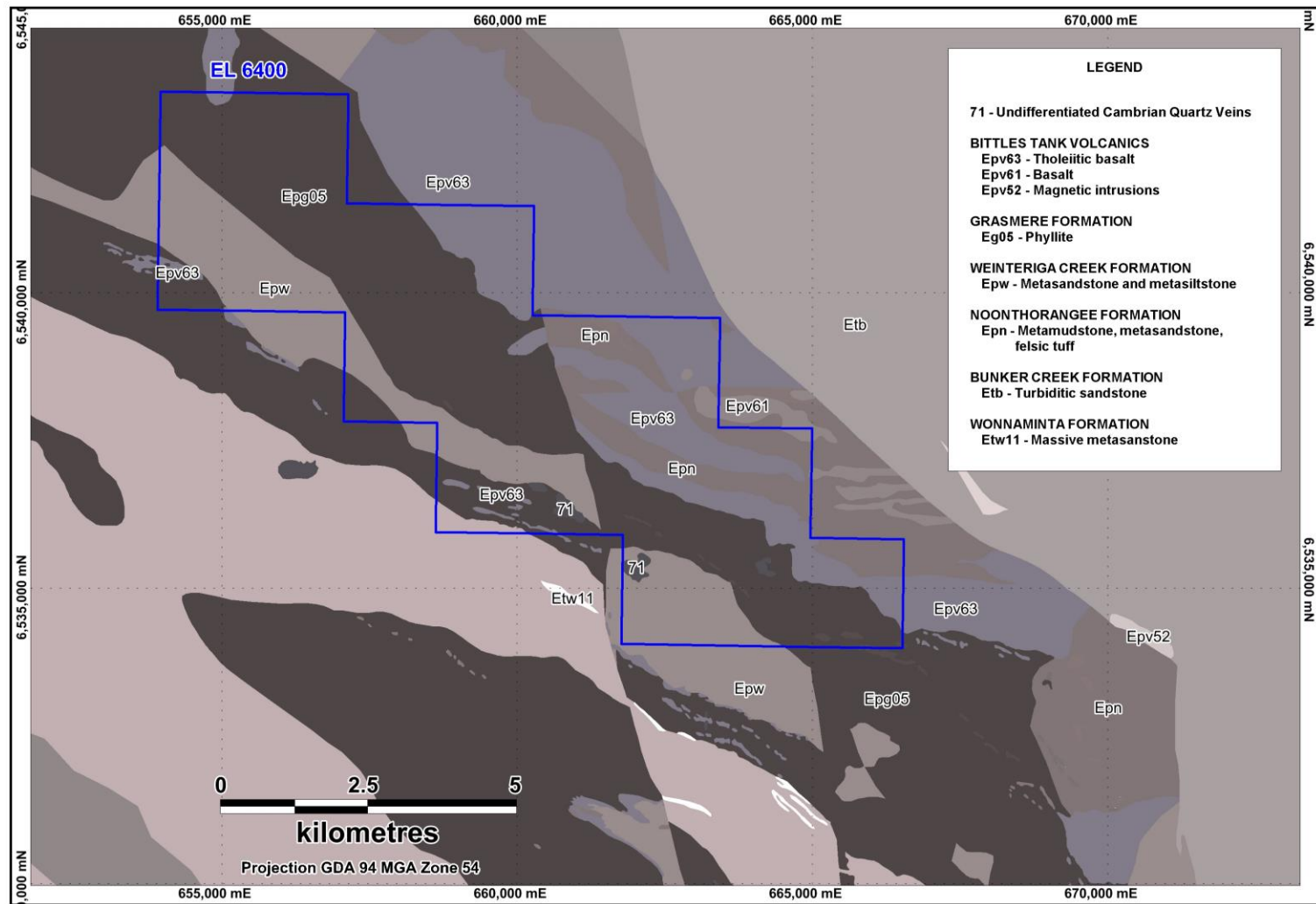
## EL8745 Kambarra– Kambarra North Prospect

- The prospect is located near the southern boundary of EL 8745
- Outcrop is limited to small areas (5m x 5m) of bedrock in a broad flat open plain
- Shallow drilling (<50m) has delineated an intermittent zone of gossan and hematite breccia over 1km with little to no surface expression
- Elevated drill geochemistry to 1900ppm Cu, 500ppm Zn and 300ppm Co encompasses the gossan/breccia zone in a ENE trending magnetic low

# EL6400 – Grassmere



# EL6400 – Grassmere



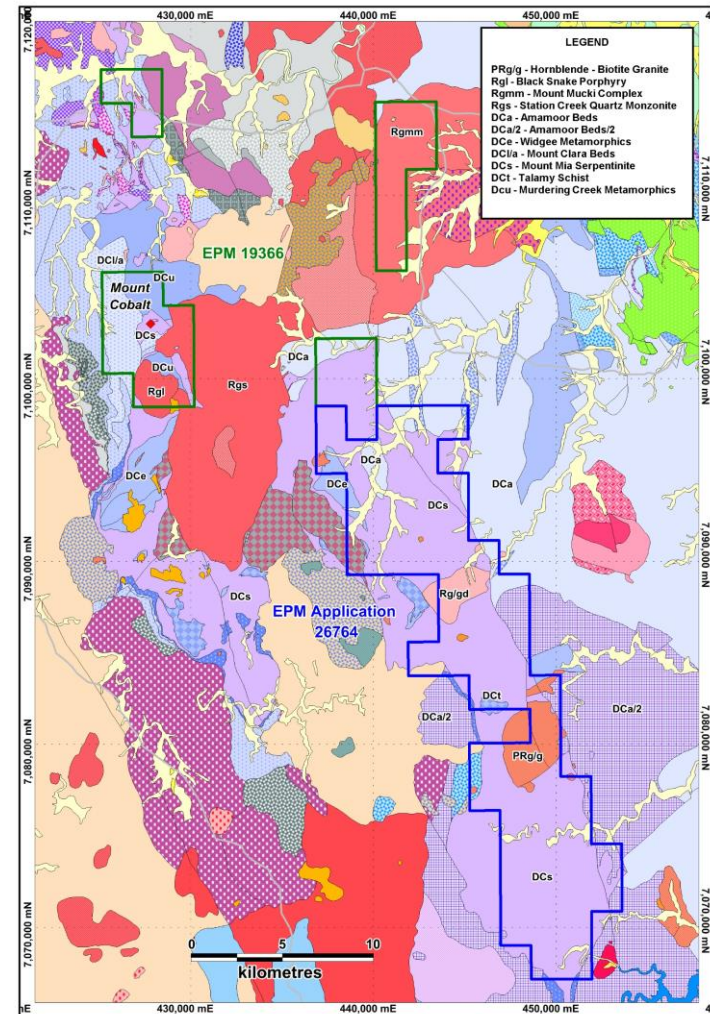
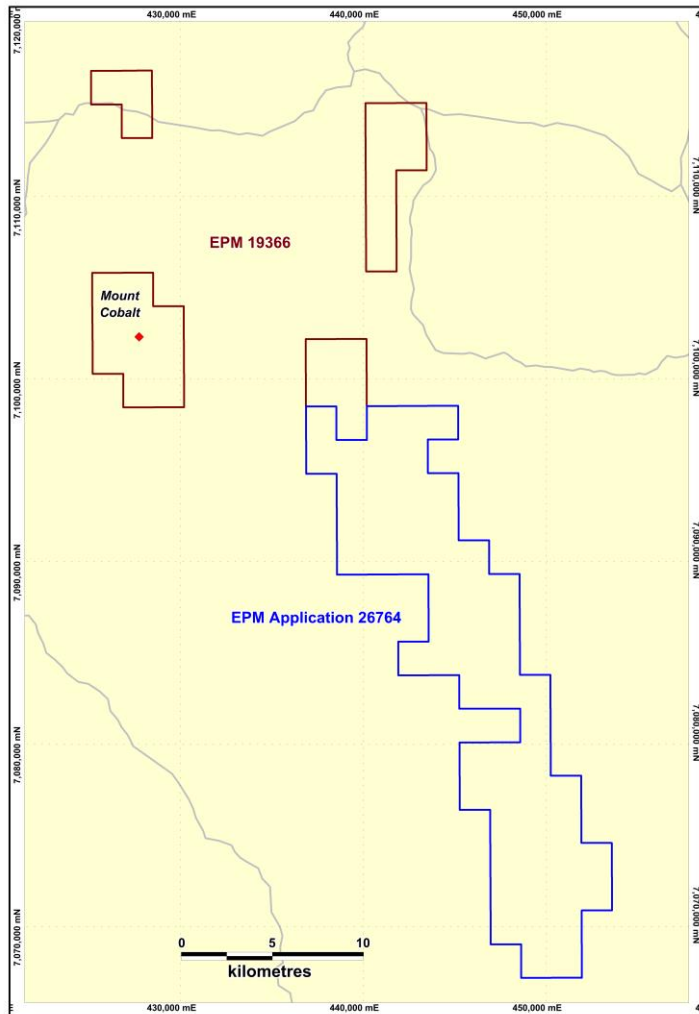


## EL6400 – Grassmere

- This EL covers the Grasmere-Peveril Cu-Zn-(Ag) deposits, which contain a significant indicated and inferred JORC Code 2004 compliant resource of 5.75mt @ 1.03% Cu, 0.35% Zn, 2.3g/t Ag and 0.05g/t Au (Inferred: 2.73 mt grading 0.9% Cu, 0.4% Zn, .04 g/t Au and 2.05 g/t Ag. Indicated: 3.02 mt grading 1.15% copper, 0.3% Zn, 0.06 g/t Au and 2.53 g/t Ag).  
*Information relating to this mineral resource was prepared and first reported in accordance with the JORC Code 2004 in 2006. It has not been updated since, to comply with the JORC Code 2012, on the basis that the information has not materially changed since it was reported in 2006. Exploration to date has not achieved an increase in that resource.*
- The Company is currently looking at an Insitu leaching option for the deposit with the 600+ existing drill holes could be selectively re-entered (cleaned out) and used as leach wells or extraction wells.



# EPM 26764 – Mt Tewoo

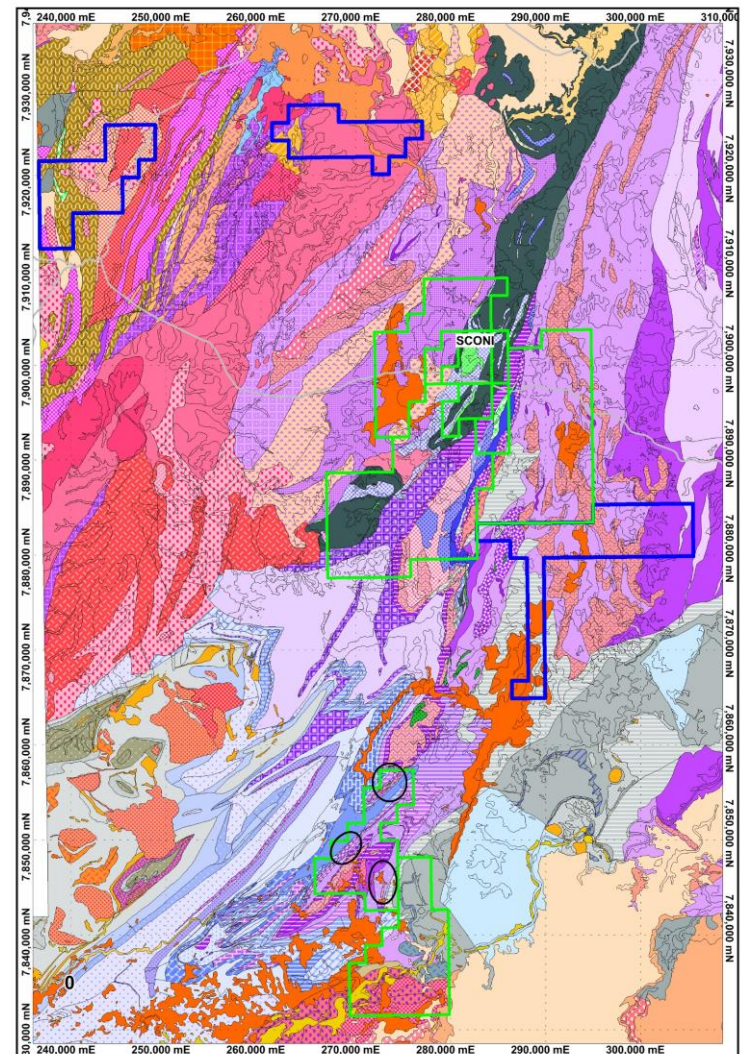
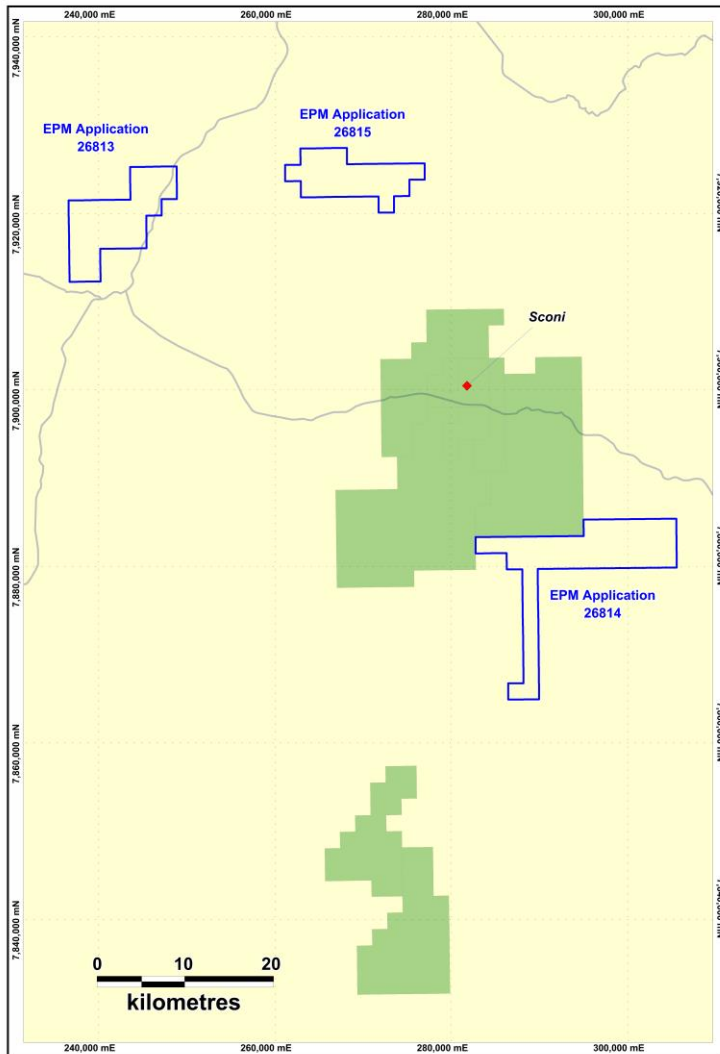




## EPM 26764 – Mt Tewoo

- The Company is targeting nickel and cobalt mineralisation associated with ultramafic rocks.
- The Mt Tewoo tenement comprises 30 strike kms of ultramafic rocks to the south of Aus Tin Mining's Mt Cobalt Project.
- Mt Cobalt is a Co/Ni Laterite style associated with altered ultramafics with historical mining of the Smith Lode resulting in 7m true widths of 7.5% Co, 2.5% Ni and 18% Mn as reported by Aus Tin Mining.
- The mineralisation at Mt Cobalt occurs within the mineral Asbolite which is an earth mineral oxide aggregate of Ni,Co and Mn
- Drilling in 2016 by Aus Tin Mining at Mt Cobalt returned a 7m intersection of 0.85% Co and 0.83% Ni.

# EPMs 26813 to 26815 – Greenvale





## EPMs 26813 to 26815 – Greenvale

- The Greenvale project is located 20-50km SE and NW of the Sconi Project
- Australian Mines Limited have announced a JORC2012 resource for their Sconi Project and completed a Pre Feasibility Study with a Bankable Feasibility study pending release.
  - Measured 17Mt @ 0.8% Ni and 0.07% Co
  - Indicated 48Mt @ 0.58% Ni and 0.07% Co
  - Inferred 24Mt @ 0.41% Ni and 0.06% Co

## ACTIVITIES - Next 6 to 12 Months

- ❑ Broken Hill Tenements - Surface geochemical sampling and regolith/geological mapping of Co/Zn zones in conjunction with ground magnetic surveys. Drill test high priority targets
- ❑ Koonenberry EL 6400 - Seek partner to explore the Insitu leaching of Cu.
- ❑ Pooraka-Review historical data and review possibility for further gold targets.
- ❑ Mt Tewoo – After grant review of historical data in conjunction with surface geochemical sampling using portable XRF analyser.
- ❑ Greenvale- Same as for Mt Tewoo